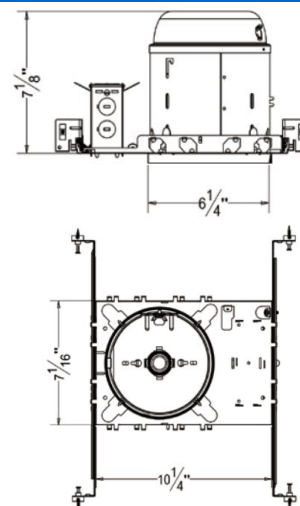


## A6 6 inch New Construction Non-IC Recessed Housing

Catalog #		Prepared by		LiteHarbor
Project		Date		
Notes				



### 6 inch New Construction Non-IC Recessed Housing

#### Housing

- 1) Die-formed aluminum for maximum heat dissipation and rust protection
- 2) Designed for New Construction installation
- 3) Housing can be installed in 1/2" to 1-3/8" thick ceilings.
- 4) Housing is Non-IC rated must be kept at least 3" away from insulation

#### Hanger Bar

- 1) Allow housing to be positioned and locked at any point within a 24" joist span.
- 2) Can be shortened for 12" joists
- 3) Can be positioned on long or short axis of the housing
- 4) Contain integral nail
- 5) Hanger fit onto T-bar spline for quick alignment

#### Junction Box

- 1) ETL listed for through branch wiring
- 2) 4 in-4 out J-box
- 3) Designed for straight through conduit runs
- 4) 1/2" and 3/4" romex wiring knockouts

#### Order Matrix

A      B      C      D      E

Item No.:A6

A	Series
A6	6"/ New Construction NON-IC Housing

B	Input Voltage
277	120V 277V

C	Lamp
P30	PAR30
P38	PAR38
R30	R30
R40	R40
A19	A19

D	Wattage
L12	LED 12W
L18	LED 18W
L24	LED 24W



**Liteharbor Lighting Technology Co., Ltd.**

New Industry Area Hecun Danzao Town  
Nanhai Foshan City Guangdong China

TEL: +86-757-8180 8675

FAX: +86-757-8180 8685

E-mail: info@liteharbor.com

Website: www.liteharbor.com

Specifications subject to change w/o notice

Revision: Jan. 2015

## Lamp & Socket

See Trim for max. wattage and lamp

CRI>80%

PF>0.9

Color Temperature:2800K-6500K

E	Color Temperature
28K	2800k
35K	3500K
50K	5000K
60K	6000K

## Listing

ETL listed for damp location W/Feed through

Other Special requirement please confirm with factory



RECESSED DOWNLIGHT



**Liteharbor Lighting Technology Co., Ltd.**

New Industry Area Hecun Danzao Town

Nanhai Foshan City Guangdong China

TEL: +86-757-8180 8675

FAX: +86-757-8180 8685

E-mail: info@liteharbor.com

Website: www.liteharbor.com

Specifications subject to change w/o notice

Revision: Jan. 2015

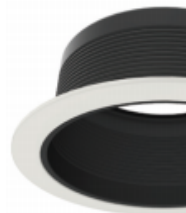
## 6" TRIM OPTICS



**B6001**

**6" Baffle Trim**

**Lamp:** R30/PAR30 LED E26 18W Max.



**B6001L**

**6" Baffle Trim**

**Lamp:** R40/PAR38 LED E26 24W Max.



**B6002**

**6" Reflector Trim**

**Lamp:** R30/PAR30 LED E26 18W Max.



**B6002L**

**6" Reflector Trim**

**Lamp:** R40/PAR38 LED E26 24W Max.



**B6003**

**6" Eyeball Trim**

**Lamp:** R30/PAR30 LED E26 18W Max.



**B6003B**

**6" Eyeball Baffle Trim**

**Lamp:** R30/PAR30 LED E26 18W Max.



**B6007**

**6" Gimbal Ring Trim**

**Lamp:** R30/PAR30 LED E26 18W Max.



**B6007L**

**6" PAR38 Gimbal Ring Trim**

**Lamp:** R40/PAR38 LED E26 24W Max.



**B6011**

**6" Cone Baffle Trim**

**Lamp:** A19 LED E26 12W Max.



**B6012**

**6" Reflector and Baffle Trim**

**Lamp:** A19 LED E26 12W Max.



RECESSED DOWNLIGHT



**Liteharbor Lighting Technology Co., Ltd.**

New Industry Area Hecun Danzao Town

Nanhai Foshan City Guangdong China

TEL: +86-757-8180 8675

FAX: +86-757-8180 8685

E-mail: info@liteharbor.com

Website: www.liteharbor.com

Specifications subject to change w/o notice

Revision: Jan. 2015



### B6012W

#### 6" Full Reflector Trim

Lamp: A19 LED E26 12W Max.



### B6013

#### 6" Eyeball and Baffle Trim

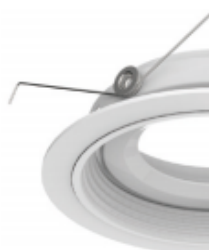
Lamp: R30/PAR30 LED E26 18W Max.



### B6016

#### 6" Wall Wash Baffle Trim

Lamp: R30/PAR30 LED E26 18W Max.



### B6017

#### 6" Gimbal Ring Trim with Baffle

Lamp: R30/PAR30 LED E26 18W Max.



### B6017L

#### 6" Adjustable Gimbal Trim with Baffle

Lamp: R40/PAR38 LED E26 24W Max.



### B6021

#### 6" PAR30 Baffle Trim

Lamp: R30/PAR30 LED E26 18W Max.



### B6021L

#### 6" PAR38 Baffle Trim

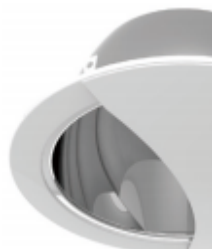
Lamp: R40/PAR38 LED E26 24W Max.



### B6022

#### 6" Cone Reflector Trim

Lamp: A19 LED E26 12W Max.



### B6026

#### 6" Wall Wash Reflector Trim

Lamp: R30/PAR30 LED E26 18W Max.



### B6300

#### 6" Shower Trim with Fresnel Lens

Lamp: A19 LED E26 12W Max.

Gasket used to prevent moisture  
Wet location listed



**Liteharbor Lighting Technology Co., Ltd.**

New Industry Area Hecun Danzao Town  
Nanhai Foshan City Guangdong China

TEL: +86-757-8180 8675

FAX: +86-757-8180 8685

E-mail: info@liteharbor.com

Website: www.liteharbor.com

Specifications subject to change w/o notice

Revision: Jan. 2015



### B6400

#### 6" Shower Trim with Albalite Lens

**Lamp:** A19 LED E26 12W Max.

Gasket used to prevent moisture  
Wet location listed



### B6500

#### 6" Shower Trim with Drop Opal

**Lamp:** A19 LED E26 12W Max.

Gasket used to prevent moisture  
Wet location listed



### B6700

#### 6" Shower Trim with Centre Frosted Lens

**Lamp:** A19 LED E26 12W Max.

Gasket used to prevent moisture  
Wet location listed



### B6800

#### 6" Shower with Frosted Lens

**Lamp:** A19 LED E26 12W Max.

Gasket used to prevent moisture  
Wet location listed



**Liteharbor Lighting Technology Co., Ltd.**

New Industry Area Hecun Danzao Town  
Nanhai Foshan City Guangdong China

TEL: +86-757-8180 8675

FAX: +86-757-8180 8685

E-mail: [info@liteharbor.com](mailto:info@liteharbor.com)

Website: [www.liteharbor.com](http://www.liteharbor.com)

Specifications subject to change w/o notice

Revision: Jan. 2015