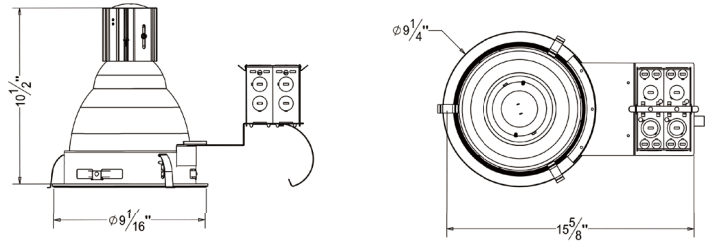




**ORDER MATRIX** | Example: A8R-VA

A	B	C	D	E
<b>A</b>	Series			
<b>A8R-VA</b>	8" Architectural Vertical Remodel Housing			
<b>B</b>	Input Voltage			
	120V			
<b>277</b>	277V			
<b>U</b>	120-277V			
<b>C</b>	Lamp			
<b>P30</b>	PAR30			
<b>P38</b>	PAR38			
<b>A19</b>	A19			
<b>A21</b>	A21			
<b>A23</b>	A23			
<b>D</b>	Wattage			
<b>L18</b>	18W			
<b>L24</b>	24W			
<b>L12</b>	12W			
<b>L17</b>	17W			
<b>L20</b>	20W			
<b>E</b>	Color Temperature			
<b>28K</b>	2800K			
<b>35K</b>	3500K			
<b>50K</b>	5000K			
<b>65K</b>	6500K			

**8" Architectural Vertical Remodel Housing**



**Mounting**

- Constructed from 16-gauge steel, die-formed construction for max heat dissipation and rust protection
- Precision tooled springs secure trim to mounting frame for effortless and tool-less installation
- Fully assembled for ease of installation
- Non-IC housing require a minimum clearance of 3" around from thermal insulation and 1/2" from combustible material from above the fixture

**Junction Box**

- Pre-wired junction box provided with 1/2" and 3/4" knockouts, romex knockouts with pry-out slots and strain clamps
- Provided with removable access plates
- All leads are #18AWG wire, the ground wire connected to the bottom and quick connectors are supplied on all leads
- Through branch circuit wiring (4 in, 4 out)

**Socket Cup**

- Adjusts vertically for optimum light performance
- Die-cast fin construction for heat dissipation
- Unitized optics guarantees proper trim to housing installation
- Tool-less installation adjustability from either outside the housing or inside the housing

**Reflector**

- High quality reflector with 1.2mm thickness available
- Optional painted white flange is available

**Thermal Protector**

- Meet ETL requirements
- Standard thermal protection device guards against improper installation, over lamping and misuse of insulation material
- External thermal device located on the junction box wrap

**Socket**

- E26 medium base

**Lamp**

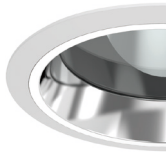
- LED PAR30 18W max.
- LED PAR38 24W max.
- LED A19 12W max.
- LED A21 17W max.
- LED A23 20W max.
- CRI>80%
- PF>0.9
- Color Temperature: 2800K-6500K

**Listing**

- ETL listed for damp location W/Feed through



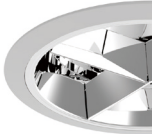
**RV8002**  
8 inch Vertical Reflector  
Self Flanged/White Ring



**RC802**  
8 inch Vertical Reflector with  
Regressed Lens  
Self Flanged/White Ring



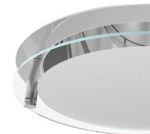
**RC803**  
8 inch Vertical Baffle with  
Regressed Lens  
Self Flanged/White Ring



**RC808**  
8 inch Vertical Cross Blade  
White Ring



**RV812**  
8 inch Vertical Reflector with  
Baffle  
White Ring



**RC188**  
8 inch Vertical Reflector with  
Drop Glass  
Self Flanged