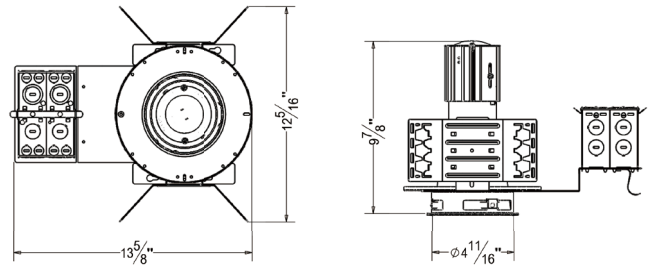




## 4" Architectural Vertical Compact Fluorescent Housing



### ORDER MATRIX | Example: AF4-VA

A	B	C	D	E	F
<b>A</b>	Series				
<b>AF4-VA</b>	4" Vertical Architectural Housing Compact Fluorescent				
<b>B</b>	Input Voltage				
	120V				
<b>277</b>	277V				
<b>U</b>	120-277V				
<b>C</b>	Lamp/Wattage				
<b>13</b>	DTT/ TRT 13W				
<b>18</b>	DTT/ TRT 18W				
<b>26</b>	DTT/ TRT 26W				
<b>D</b>	Ballast				
	No Ballast				
<b>E</b>	Electronic Ballast				
<b>ED</b>	Dimmable Electronic Ballast				
<b>E</b>	Color Temperature				
<b>28K</b>	2800K				
<b>35K</b>	3500K				
<b>50K</b>	5000K				
<b>65K</b>	6500K				
<b>F</b>	Options				
<b>C</b>	C-channel Bar Hanger				
<b>F</b>	Flat Bar Hanger				
<b>H</b>	Wood Joist Bar Hanger				

### Mounting

- Constructed from 16-gauge steel, die-formed construction for max heat dissipation and rust protection
- Precision tooled springs secure trim to mounting frame for effortless and tool-less installation
- Compatible with C-channel, flat bar wood joist bar hanger and EMT.
- Fully assembled for ease of installation
- Non-IC housing require a minimum clearance of 3" around from thermal insulation and 1/2" from combustible material from above the fixture

### Junction Box

- Pre-wired junction box provided with 1/2" and 3/4" knockouts
- Provided with removable access plates
- Knockouts equipped with pry out slots
- All leads are #18AWG wire, the ground wire connected to the bottom and quick connectors are supplied on all leads
- Through branch circuit wiring (4 in, 4 out)

### Socket Cup

- Adjusts vertically for optimum light performance
- Die-cast fin construction for heat dissipation
- Unitized optics guarantees proper trim to housing installation
- Tool-less installation adjustability from either outside the housing or inside the housing

### Reflector

- High quality reflector with 1.2mm thickness available finishes and types in multiple architectural finishes and types.
- Optional painted white flange is available
- Single position optics eliminate possibility of specified lamp being installed in incorrect position

### Thermal Protector

- Meet ETL requirements
- Standard thermal protection device guards against improper installation, over lamping and misuse of insulation material
- External thermal device located on the junction box wrap

### Ballast

- Thermally protected
- Electronic ballast provides full light output and rated lamp life
- Flicker free and noise free operation and starting
- End of lamp life protection is standard
- Meet FCC EMT/FRI consumer limits
- Attached to junction box cover so it may be serviced from below the ceiling no tools required

### Lamp

- 13/18/26W 4 pin
- Universal G24 4-PIN
- CRI>80%
- PF>0.9
- Color Temperature: 2700K-6500K

### Listing

- ETL listed for damp location W/Feed through