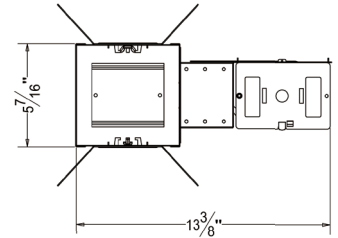
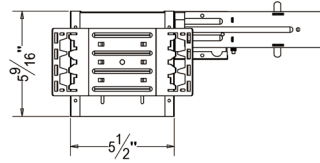


4"X4" Square Horizontal Compact Fluorescent Recessed Downlight



ORDER MATRIX | Example: AF4S

A	B	C	D	E	F
A	Series				
AF4S	4" Horizontal Architectural Housing Compact Fluorescent				
B	Input Voltage				
	120V				
277	277V				
U	120-277V				
C	Lamp/Wattage				
13	DTT 13W				
18	DTT 18W				
26	TRT 26W				
32	TRT 32W				
D	Ballast				
	No Ballast				
E	Electronic Ballast				
ED	Dimmable Electronic Ballast				
E	Color Temperature				
28K	2800K				
35K	3500K				
50K	5000K				
65K	6500K				
F	Options				
C	C-channel Bar Hanger				
F	Flat Bar Hanger				
H	Wood Joist Bar Hanger				

Mounting

- Constructed from 16-gauge steel, die-formed construction for max heat dissipation and rust protection
- Precision tooled springs secure trim to mounting frame for effortless and tool-less installation
- Compatible with C-channel, flat bar wood joist bar hanger and EMT.
- Fully assembled for ease of installation
- Non-IC housing require a minimum clearance of 3" around from thermal insulation and 1/2" from combustible material from above the fixture

Junction Box

- Pre-wired junction box provided with 1/2" and 3/4" knockouts
- Provided with removable access plates
- Knockouts equipped with pry out slots
- All leads are #18AWG wire, the ground wire connected to the bottom and quick connectors are supplied on all leads
- Through branch circuit wiring (4 in, 4 out)

Socket Cup

- Adjusts vertically for optimum light performance
- Die-cast fin construction for heat dissipation
- Unitized optics guarantees proper trim to housing installation
- Tool-less installation adjustability from either outside the housing or inside the housing

Reflector

- High quality reflector with 1.2mm thickness available finishes and types in multiple architectural finishes and types.
- Optional painted white flange is available
- Single position optics eliminate possibility of specified lamp being installed in incorrect position

Thermal Protector

- Meet ETL requirements
- Standard thermal protection device guards against improper installation, over lamping and misuse of insulation material
- External thermal device located on the junction box wrap

Ballast

- Thermally protected
- Electronic ballast provides full light output and rated lamp life
- Flicker free and noise free operation and starting
- End of lamp life protection is standard
- Meet FCC EMT/FRI consumer limits
- Attached to junction box cover so it may be serviced from below the ceiling no tools required

Lamp

- 13/18W DTT
- 26/32W TRT
- CRI>80%
- PF>0.9
- Color Temperature: 2700K-6500K

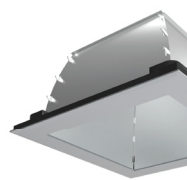
Listing

- ETL listed for damp location W/Feed through



RC514

4" Lensed Reflector
Grade Reflector, 1.2mm thickness.
1-1/2" regressed lens
Wet location listed



RC519

4" Open Reflector
Grade Reflector, 1.2mm thickness