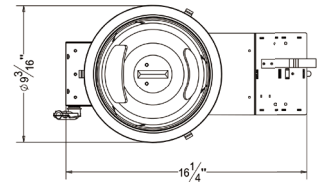
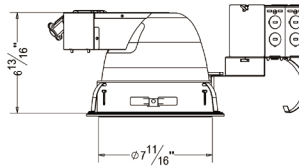




## 8" Architectural Horizontal Compact Fluorescent Remodel Housing



### ORDER MATRIX | Example: AF8R-HA

A	B	C	D	E
<b>A</b>	Series			
<b>AF8R-HA</b>	8" Horizontal Architectural Housing Compact Fluorescent			
<b>B</b>	Input Voltage			
	120V			
<b>277</b>	277V			
<b>U</b>	120-277V			
<b>C</b>	Lamp/Wattage			
<b>13</b>	DTT 13W			
<b>18</b>	DTT 18W			
<b>26</b>	DTT/TRT 26W			
<b>32</b>	TRT 32W			
<b>42</b>	TRT 42W			
<b>213</b>	DTT 2*13W			
<b>218</b>	DTT 2*18W			
<b>226</b>	DTT/TRT 2*26			
<b>232</b>	TRT 2*32W			
<b>242</b>	TRT 2*42W			
<b>D</b>	Ballast			
	No Ballast			
<b>E</b>	Electronic Ballast			
<b>ED</b>	Dimmable Electronic Ballast			
<b>E</b>	Color Temperature			
<b>28K</b>	2800K			
<b>35K</b>	3500K			
<b>50K</b>	5000K			
<b>65K</b>	6500K			

### Mounting

- Constructed from 16-gauge steel, die-formed construction for max heat dissipation and rust protection
- Precision tooled springs secure trim to mounting frame for effortless and tool-less installation
- Compatible with C-channel, flat bar wood joist bar hanger and EMT.
- Fully assembled for ease of installation
- Non-IC housing require a minimum clearance of 3" around from thermal insulation and 1/2" from combustible material from above the fixture

### Junction Box

- Pre-wired junction box provided with 1/2" and 3/4" knockouts
- Provided with removable access plates
- Knockouts equipped with pry out slots
- All leads are #18AWG wire, the ground wire connected to the bottom and quick connectors are supplied on all leads
- Through branch circuit wiring (4 in, 4 out)

### Socket Cup

- Adjusts vertically for optimum light performance
- Die-cast fin construction for heat dissipation
- Unitized optics guarantees proper trim to housing installation
- Tool-less installation adjustability from either outside the housing or inside the housing

### Reflector

- High quality reflector with 1.2mm thickness available finishes and types in multiple architectural finishes and types.
- Optional painted white flange is available
- Single position optics eliminate possibility of specified lamp being installed in incorrect position

### Thermal Protector

- Meet ETL requirements
- Standard thermal protection device guards against improper installation, over lamping and misuse of insulation material
- External thermal device located on the junction box wrap

### Ballast

- Thermally protected
- Electronic ballast provides full light output and rated lamp life
- Flicker free and noise free operation and starting
- End of lamp life protection is standard
- Meet FCC EMT/FRI consumer limits
- Attached to junction box cover so it may be serviced from below the ceiling no tools required

### Lamp

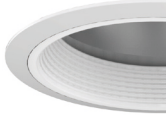
- 13/18/26/32/42/2\*13/2\*18/2\*26/2\*32/2\*42W 4 pin
- Universal G24 4-PIN
- CRI>80%
- PF>0.9
- Color Temperature: 2700K-6500K

### Listing

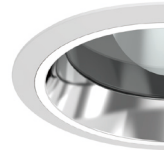
- ETL listed for damp location W/Feed through



**RH8002**  
6 inch Horizontal Reflector  
Self Flanged/White Ring



**RC811**  
6 inch Horizontal Reflector with  
Baffle  
White Ring



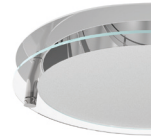
**RC812**  
6 inch Horizontal Reflector with  
Regressed Lens  
Self Flanged/White Ring



**RC813**  
6 inch Horizontal Baffle with  
Regressed Lens  
White Ring



**RC814**  
6 inch Horizontal Cross Blade  
White Ring



**RCH188**  
6 inch Horizontal Reflector with  
Drop Glass  
Self Flanged