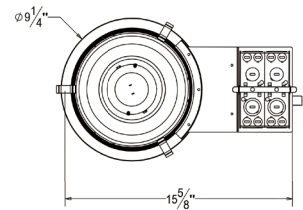
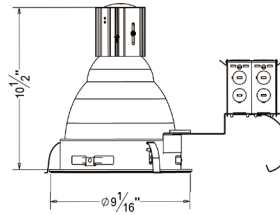




8" Architectural Vertical Remodel Housing



ORDER MATRIX | Example: AF8R-VA

A	B	C	D	E
A	Series			
AF8R-VA	8" Vertical Architectural Remodel Housing Compact Fluorescent			
B	Input Voltage			
	120V			
277	277V			
U	120-277V			
C	Lamp/Wattage			
13	DTT/ TRT 13W			
18	DTT/ TRT 18W			
26	DTT/ TRT 26W			
32	TRT 32W			
42	TRT 42W			
D	Ballast			
	No Ballast			
E	Electronic Ballast			
ED	Dimmable Electronic Ballast			
E	Color Temperature			
28K	2800K			
35K	3500K			
50K	5000K			
65K	6500K			

Mounting

- Constructed from 16-gauge steel, die-formed construction for max heat dissipation and rust protection
- Precision tooled springs secure trim to mounting frame for effortless and tool-less installation
- Compatible with C-channel, flat bar wood joist bar hanger and EMT.
- Fully assembled for ease of installation
- Non-IC housing require a minimum clearance of 3" around from thermal insulation and 1/2" from combustible material from above the fixture

Junction Box

- Pre-wired junction box provided with 1/2" and 3/4" knockouts
- Provided with removable access plates
- Knockouts equipped with pry out slots
- All leads are #18AWG wire, the ground wire connected to the bottom and quick connectors are supplied on all leads
- Through branch circuit wiring (4 in, 4 out)

Socket Cup

- Adjusts vertically for optimum light performance
- Die-cast fin construction for heat dissipation
- Unitized optics guarantees proper trim to housing installation
- Tool-less installation adjustability from either outside the housing or inside the housing

Reflector

- High quality reflector with 1.2mm thickness available finishes and types in multiple architectural finishes and types.
- Optional painted white flange is available
- Single position optics eliminate possibility of specified lamp being installed in incorrect position

Thermal Protector

- Meet ETL requirements
- Standard thermal protection device guards against improper installation, over lamping and misuse of insulation material
- External thermal device located on the junction box wrap

Ballast

- Thermally protected
- Electronic ballast provides full light output and rated lamp life
- Flicker free and noise free operation and starting
- End of lamp life protection is standard
- Meet FCC EMT/FRI consumer limits
- Attached to junction box cover so it may be serviced from below the ceiling no tools required

Lamp

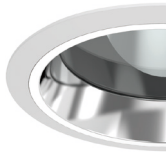
- 13/18/26/32/42W 4 pin
- Universal G24 4-PIN
- CRI>80%
- PF>0.9
- Color Temperature: 2700K-6500K

Listing

- ETL listed for damp location W/Feed through



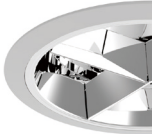
RV8002
8 inch Vertical Reflector
Self Flanged/White Ring



RC802
8 inch Vertical Reflector with
Regressed Lens
Self Flanged/White Ring



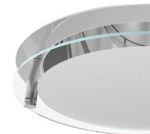
RC803
8 inch Vertical Baffle with
Regressed Lens
Self Flanged/White Ring



RC808
8 inch Vertical Cross Blade
White Ring



RV812
8 inch Vertical Reflector with
Baffle
White Ring



RC188
8 inch Vertical Reflector with
Drop Glass
Self Flanged