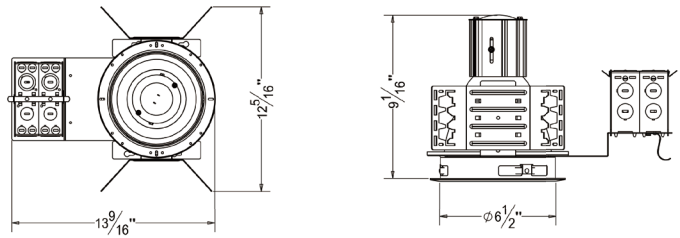




## 6" Architectural Vertical HID Metal Halide Housing



### ORDER MATRIX | Example: AM6-VA

A	B	C	D	E	F
<b>A</b>	Series				
<b>AM6-VA</b>	6" Vertical Architectural Housing HID Metal Halide				
<b>B</b>	Input Voltage				
	120V				
<b>277</b>	277V				
<b>U</b>	120-277V				
<b>C</b>	Lamp/ Wattage				
<b>P30</b>	PAR30MH 39W/ 70W				
<b>P38</b>	PAR38MH 70W				
<b>ED17</b>	ED17 70W/ 100W				
<b>D</b>	Ballast				
	No Ballast				
<b>E</b>	Electronic Ballast				
<b>E</b>	Color Temperature				
<b>28K</b>	2800K				
<b>35K</b>	3500K				
<b>50K</b>	5000K				
<b>65K</b>	6500K				
<b>F</b>	Options				
<b>C</b>	C-channel Bar Hanger				
<b>F</b>	Flat Bar Hanger				
<b>H</b>	Wood Joist Bar Hanger				

### Mounting

- Constructed from 16-gauge steel, die-formed construction for max heat dissipation and rust protection
- Precision tooled springs secure trim to mounting frame for effortless and tool-less installation
- Compatible with C-channel, flat bar, wood joist bar hanger and EMT
- Fully assembled for ease of installation
- Non-IC housing require a minimum clearance of 3" around from thermal insulation and 1/2" from combustible material from above the fixture

### Junction Box

- Pre-wired junction box provided with 1/2" and 3/4" knockouts, romex knockouts with pry-out slots and strain clamps
- Provided with removable access plates
- All leads are #18AWG wire, the ground wire connected to the bottom and quick connectors are supplied on all leads
- Through branch circuit wiring (4 in, 4 out)

### Socket Cup

- Adjusts vertically for optimum light performance
- Die-cast fin construction for heat dissipation
- Unitized optics guarantees proper trim to housing installation
- Tool-less installation adjustability from either outside the housing or inside the housing

### Reflector

- High quality reflector with 1.2mm thickness available
- Optional painted white flange is available

### Thermal Protector

- Meet ETL requirements
- Standard thermal protection device guards against improper installation, over lamping and misuse of insulation material
- External thermal device located on the junction box wrap

### Ballast

- High power factor electronic HID metal halide ballast
- 120V or 277V input voltage at 50/60Hz
- High power factor
- Harmonic distortion < 15%
- Thermally protected
- Minimum ballast temp = -15 C
- Sound rated A

### Socket

- E26 medium base

### Lamp

- 39/70W PAR30MH
- 70/100W PAR38MH
- 39/50/70/100W ED17
- Color Temperature: 2800K-6500K

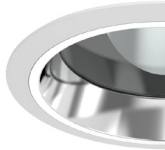
### Listing

- ETL listed for damp location W/Feed through



**RV6002**

6 inch Vertical Reflector  
Self Flanged/White Ring



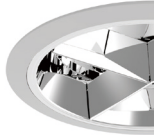
**RC602**

6 inch Vertical Reflector with  
Regressed Lens  
Self Flanged/White Ring



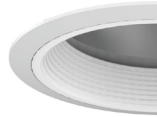
**RC603**

6 inch Vertical Baffle with  
Regressed Lens  
Self Flanged/White Ring



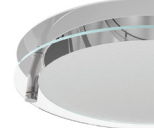
**RC608**

6 inch Vertical Cross Blade  
White Ring



**RV612**

6 inch Vertical Reflector with  
Baffle  
White Ring



**RC166**

6 inch Vertical Reflector with  
Drop Glass  
Self Flanged