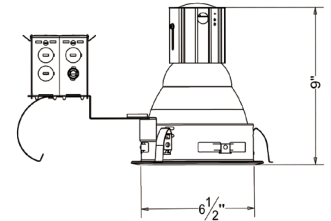
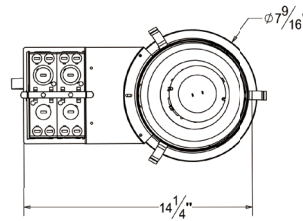




6" Architectural Vertical HID Metal Halide Remodel Housing



ORDER MATRIX | Example: AM6R-VA

A	B	C	D	E
A	Series			
AM6R-VA	6" Vertical Architectural Remodel Housing HID Metal Halide			
B	Input Voltage			
	120V			
277	277V			
U	120-277V			
C	Lamp/ Wattage			
P30	PAR30MH 39W/ 70W			
P38	PAR38MH 70W			
ED17	ED17 70W/ 100W			
D	Ballast			
	No Ballast			
E	Electronic Ballast			
E	Color Temperature			
28K	2800K			
35K	3500K			
50K	5000K			
65K	6500K			

Mounting

- Constructed from 16-gauge steel, die-formed construction for max heat dissipation and rust protection
- Precision tooled springs secure trim to mounting frame for effortless and tool-less installation
- Fully assembled for ease of installation
- Non-IC housing require a minimum clearance of 3" around from thermal insulation and 1/2" from combustible material from above the fixture

Junction Box

- Pre-wired junction box provided with 1/2" and 3/4" knockouts, romex knockouts with pry-out slots and strain clamps
- Provided with removable access plates
- All leads are #18AWG wire, the ground wire connected to the bottom and quick connectors are supplied on all leads
- Through branch circuit wiring (4 in, 4 out)

Socket Cup

- Adjusts vertically for optimum light performance
- Die-cast fin construction for heat dissipation
- Unitized optics guarantees proper trim to housing installation
- Tool-less installation adjustability from either outside the housing or inside the housing

Reflector

- High quality reflector with 1.2mm thickness available
- Optional painted white flange is available

Thermal Protector

- Meet ETL requirements
- Standard thermal protection device guards against improper installation, over lamping and misuse of insulation material
- External thermal device located on the junction box wrap

Ballast

- High power factor electronic HID metal halide ballast
- 120V or 277V input voltage at 50/60Hz
- High power factor
- Harmonic distortion < 15%
- Thermally protected
- Minimum ballast temp = -15 C
- Sound rated A

Socket

- E26 medium base

Lamp

- 39/70W PAR30MH
- 70/100W PAR38MH
- 39/50/70/100W ED17
- Color Temperature: 2800K-6500K

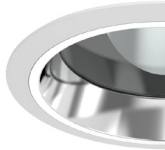
Listing

- ETL listed for damp location W/Feed through



RV6002

6 inch Vertical Reflector
Self Flanged/White Ring



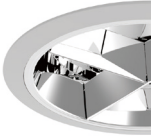
RC602

6 inch Vertical Reflector with
Regressed Lens
Self Flanged/White Ring



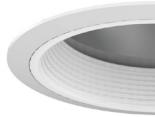
RC603

6 inch Vertical Baffle with
Regressed Lens
Self Flanged/White Ring



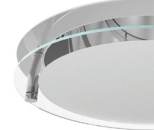
RC608

6 inch Vertical Cross Blade
White Ring



RV612

6 inch Vertical Reflector with
Baffle
White Ring



RC166

6 inch Vertical Reflector with
Drop Glass
Self Flanged