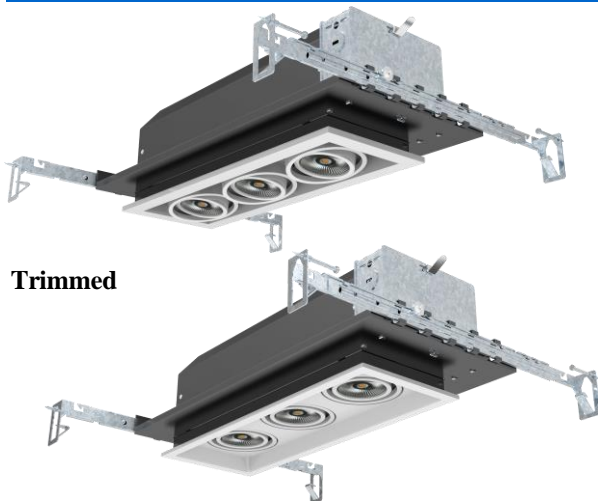
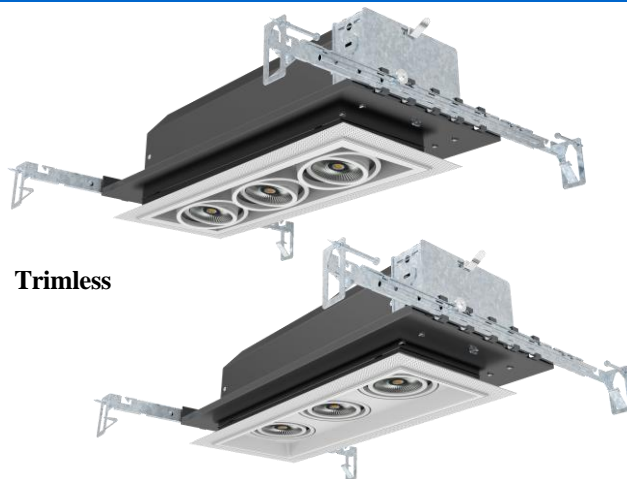


Trim or Trimless Residential Mini Multiple Downlight

Catalog #		Prepared by	LiteHarbor
Project		Date	
Notes			



Trimmed



Trimless

ORDER MATRIX | Example: G4013-E-COB

A	B	C	D
	A	Series	
G4011-E-COB		1-Lamp	
G4012-E-COB		2-Lamp	
G4013-E-COB		3-Lamp	
G4014-E-COB		4-Lamp	
	B	Input Voltage	
		120V	
	##	277V	
	U	120-277V	
	C	Available Chips	
	Cree	Cree	
	Citizen	Citizen	
	Epistar	Epistar	
	Seoul	Seoul	
	Osram	Osram	

Description

Mini LED Multiple Spots for remodeling and new construction applications for residential and commercial environments. The Multiple Spots are marketed as complete units including the housing and trim. Available as one, two and three-light configurations, each spot is individually adjustable and provides a 30-degree visual cutoff for glare control.

Features

Individually adjustable luminaries
Complete unit includes housing & trim
All housings are Non-IC rated
30 °vertical tilt, 360 °horizontal rotation

Construction

Die-cast aluminum heat sink painted black. Trim and housing are constructed of Gauge Steel.

Mounting

Supplied with 4 ways hanger bar, adjustable from 14½"-25" to accommodate various joist construction and grid sizes. Hanger bars include a captive mounting "screw-nail" for ease installation. Can be accommodate a 1/2" to 1 1/4" ceiling thickness.



Liteharbor Lighting Technology Co., Ltd.

New Industry Area Hecun Danzao Town
Nanhai Foshan City Guangdong China

TEL: +86-757-8180 8675

FAX: +86-757-8180 8685

E-mail: info@liteharbor.com

Website: www.liteharbor.com

Specifications subject to change w/o notice

Revision: Jan. 2015



MULTIPLE DOWNLIGHT

D	Color Temperature
27K	2700K
30K	3000K
35K	3500K
41K	4100K
65K	6500K

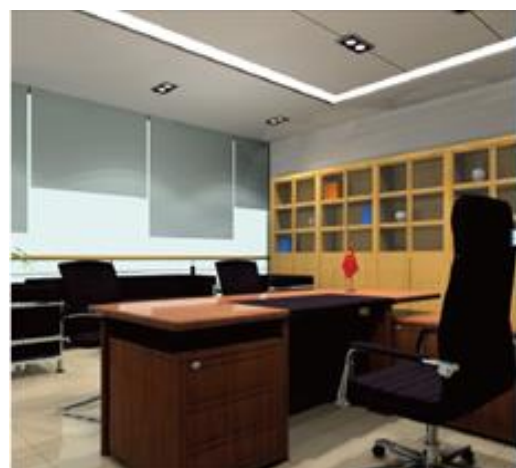
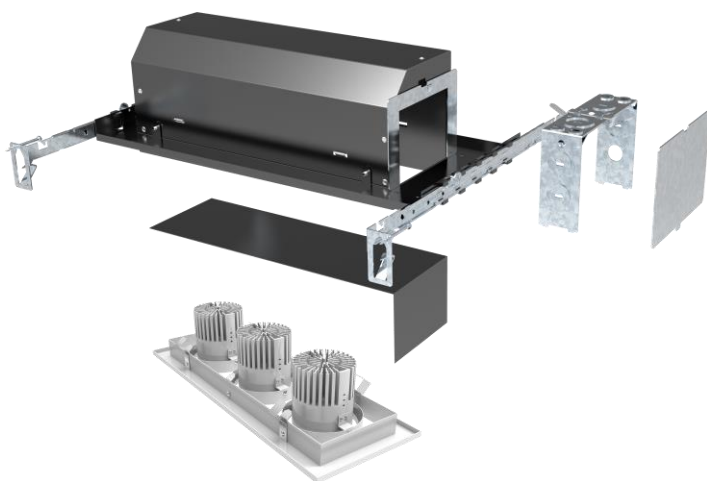
Light Source

High output COB LED Chips

Dimming

Dimmable to 10% with most brand dimmers.

Input Voltage	AC 90-305V 50/60Hz
Rated Power	10/Lamp
Luminous Efficiency	70 LM/W
Lamp	COB
Color Temperature	2700-6500K
Material	Gauge Steel
Power Factor	> 0.98
CRI	Ra80 / Ra90



Option 1

Universal hollow open flanged design
Strong welding make a stable structure



Option 2

Special closed flanged design without seeing the body inside
One forming without welding spot make a better effect overall



Liteharbor Lighting Technology Co., Ltd.

New Industry Area Hecun Danzao Town
Nanhai Foshan City Guangdong China

TEL: +86-757-8180 8675

FAX: +86-757-8180 8685

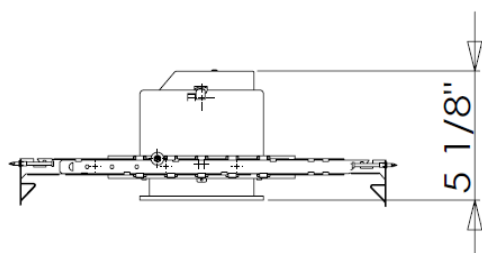
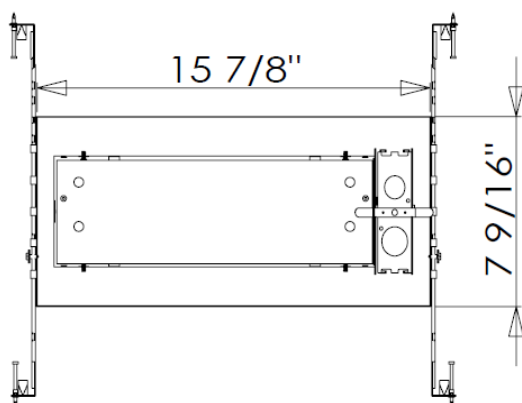
E-mail: info@liteharbor.com

Website: www.liteharbor.com

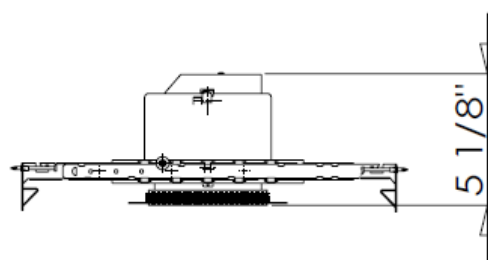
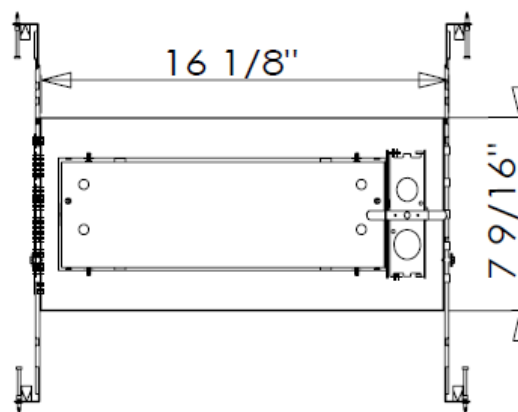
Specifications subject to change w/o notice

Revision: Jan. 2015

Trimmed



Trimless



MULTIPLE DOWNLIGHT



Liteharbor Lighting Technology Co., Ltd.

New Industry Area Hecun Danzao Town
Nanhai Foshan City Guangdong China

TEL: +86-757-8180 8675

FAX: +86-757-8180 8685

E-mail: info@liteharbor.com

Website: www.liteharbor.com

Specifications subject to change w/o notice

Revision: Jan. 2015