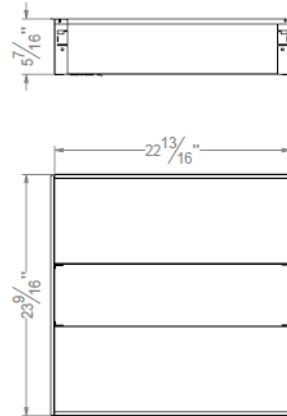
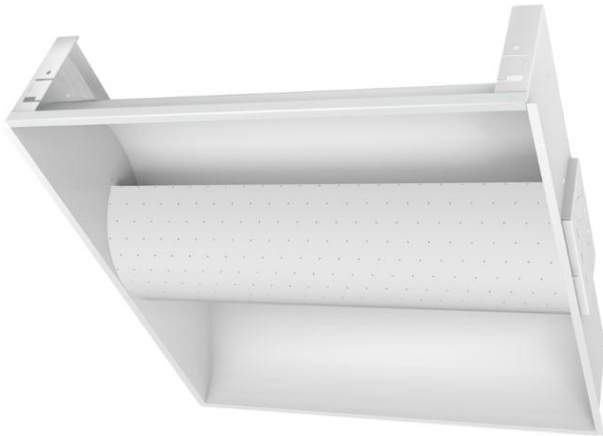


High-Performance LED Architectural Recessed Luminaire

Catalog #		Prepared by	LiteHarbor
Project		Date	
Notes			



Features

The 2x2 Architectural Basket Series delivers up to 3200 lumens while achieving 100 lumens per watt.

Direct/Indirect distribution of soft light creates superior brightness control and balanced light for today's commercial buildings. □

Available in wide range of color temperatures with 0-10V dimming.

No harmful ultraviolet or infrared wavelengths.

Contains no lead or mercury.

Housing

Cold rolled steel or electro galvanized substrate. Highly reflective white finish on phosphate-free, multi-staged pretreated metal.

Air Return has slots above basket.

Air Handling has slots along the sides.

Mounting

Light weight and easy to install in any standard T-Bar or screw slot grids. 9/16" Screw Slot option allows fixture trim to hang level with architectural ceiling tiles. Drywall frame available for plaster/drywall ceilings, see accessories. Ideal for new construction and remodel applications.

Order Matrix:

Example: DGL-RF220-30K-WP-32-DM

<u>A</u>	<u>B</u>	<u>C</u>	<u>D</u>	<u>E</u>	<u>F</u>
A		Series			
DGL-RF220	Architectural Recessed Luminaire				
B		Input Voltage			
277	277V				
U	120-277V				
347	347V				
C		Color Temperature			
30K	3000K				
40K	4000K				
50K	5000K				
60K	6000K				
D		Basket Style			
WP	White Perforated				
OD	Opal Diffuser				



Architectural Recessed Luminaire



Liteharbor Lighting Technology Co., Ltd.

New Industry Area Hecun Danzao Town
Nanhai Foshan City Guangdong China

TEL: +86-757-8180 8675

FAX: +86-757-8180 8685

E-mail: info@liteharbor.com

Website: www.liteharbor.com

Specifications subject to change w/o notice

Revision: Jan. 2015

Basket Style

2 basket-style optics are available in Opal Diffuser or White Perforated; fixtures provide indirect, efficient lighting for wide-ranging commercial applications.

E	Wattage
32	32W
24	24W
18	18W

Reflector

High reflectance white paint provides soft, uniformed indirect light distribution.

F	Dimmable
	NON-Dimmable
DM	Dimmable

LED Light Engine

Light engine/reflector system produces 2200 to 3200 lumens while using only 32 watts of energy. 3000K, 3500K, 4100K and 5000K color temperatures. CRI \geq 80. Easily replaceable array boards allow for easy maintenance or updating technology.

LED Driver

Accommodates 120- 277V and 347V input volts AC at 50/60Hz. Power factor $>$ 0.9. Dimmable to 10% with 0-10V DC control protocol.

Lifespan

Rated for 50,000 hours at 70% lumen maintenance, 8-12 years commercial use expectancy.

Listing & Warranty

ETL listed to US and Canadian standards for damp locations. 5 years when used in accordance with manufacturing guidelines.

Packing

1 PCS/CTN
615X615X170mm/CTN



Liteharbor Lighting Technology Co., Ltd.
New Industry Area Hecun Danzao Town
Nanhai Foshan City Guangdong China

TEL: +86-757-8180 8675
FAX: +86-757-8180 8685
E-mail: info@liteharbor.com

Website: www.liteharbor.com
Specifications subject to change w/o notice
Revision: Jan. 2015