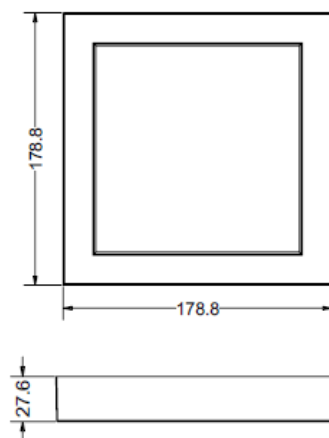


# BL6-FM7 & BL6-SFM7 7" LED Flush Mount

Catalog #		Prepared by	LiteHarbor
Project		Date	
Notes			



## ORDER MATRIX | Example: BL6-FM7

A    B    C    D    E    F

A	Series
BL6-FM7	7" Round LED Flush Mount Ceiling Light
BL6-SFM7	7" Square LED Flush Mount Ceiling Light

B	Input Voltage
	120V
277	277V
U	120-277V

C	Dimmable
	Non-Dimmable
DM	Dimmable

D	LED Available
Cree	Cree
Citizen	Citizen
Epistar	Epistar
Seoul	Seoul
Osram	Osram

### Description

An architecturally pleasing, easy to install and low profile slim LED instant mount round and square aperture downlighting.

Slim line, light weight and sleek look, provides more uniform light and an instant on.

It is a low profile downlight intended for ceiling or wall mount applications.

This luminaire offers the appearance of a recessed downlight but is actually surface mounted.

### Applications

Slim LED Flush Mount Downlight is characterized by a completely flat lens with a narrow flange, giving it an architecturally pleasing look.

This downlighting solution offers an affordable alternative to Air-Seal IC recessed housings or Fire-Rated boxes, reducing material and installation costs.

### Features

LED 7" flush mount

Decorative flush mount LED fixture

LED 13.5W Equal to a traditional 60W lamp



**Liteharbor Lighting Technology Co., Ltd.**

New Industry Area Hecun Danzao Town  
Nanhai Foshan City Guangdong China

TEL: +86-757-8180 8675

FAX: +86-757-8180 8685

E-mail: info@liteharbor.com

Website: www.liteharbor.com

Specifications subject to change w/o notice

Revision: Jan. 2015



LED RETROFIT

E	Lumen Output
BL6-SFM7	780 Lumen
BL6-FM7	800 Lumen

F	Color Temperature
27K	2700K
40K	4000K
50K	5000K

80% energy savings  
 Damp location listed  
 Mounts directly to 3" and 4" junction boxes  
 Easy to install

**Finish**

Available in White, Brushed Nickel, and Bronze

**Application**

Residential  
 Office  
 Retail  
 Hospitality

**Listing & Warranty**

2-Year Limited Warranty



LED RETROFIT



**Liteharbor Lighting Technology Co., Ltd.**

New Industry Area Hecun Danzao Town  
 Nanhai Foshan City Guangdong China

TEL: +86-757-8180 8675

FAX: +86-757-8180 8685

E-mail: info@liteharbor.com

Website: www.liteharbor.com

Specifications subject to change w/o notice

Revision: Jan. 2015