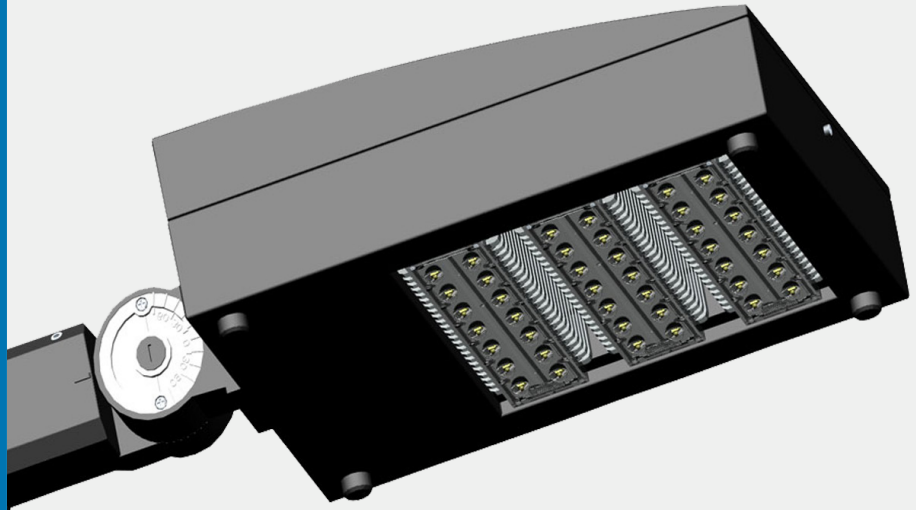




LED STREET LIGHT DG5101



DESCRIPTION

DESCRIPTION

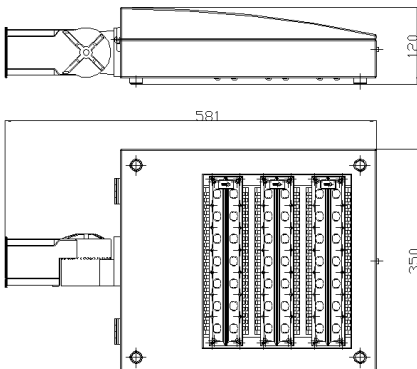
- Specifically for road lighting design and aiming at the shortage of the traditional light source, fully optimized design of a road to meet the special requirements of the new energy-saving products, this product uses the high power LED light source CREE, with optical design and thermal design of superconducting material for cooling circuit intelligent management, advanced leading products in the road lighting has superior performance.

FEATURES

- Smooth linear and the LED structure characteristic organic combination.
- Appearance simplicity, delicate and smooth.
- Modular design, effectively keep the lamp good heat dissipation effect.
- IP Rating: IP65
- Unique two light distribution design.
- Lamps and lanterns adopt imported monocrystalline silicon solar panels.
- Long life power supply to ensure that the service life of 50000 hours or more.

DIMENSIONS

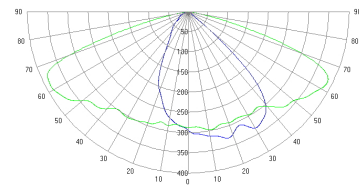
L: 581xW: 350xH: 120mm



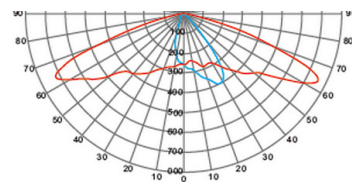
DETAILS

- Input Voltage: AC90-305V
- Frequency: 47-63Hz
- Power Factor: >0.95
- Light Source: 15WX3module
- Power: LED80-160W
- Luminous Efficiency: >110lm/W
- Luminous Flux: 9900lm
- CRI: >75
- Working Temperature: -30 --50°C
- Life Span: >50000h
- Class: CLASS I
- Dimensions: 580X350X120mm
- CCT: Warm white2850-3200K
Pure white3700K-4200K
Cool white4700K-5300K

LIGHT DISTRIBUTION CURVE



R1



R2





APPLICATION

- Suitable for urban major road, secondary road, sidewalk residential zones, industrial area, square, park, school, Villa courtyard etc.

Other Special Requirements please Confirm with Factory

ORDERING GUIDE

Model	Input Voltage	LED light source	Power	Luminous flux	Optional light	IP Rating	operation life
DG5101	AC90-305V	15WX3 Module	90 W	9900lm	R1 R2	IP65	>50000h
DG5101A	AC90-305V	20WX3 Module	100 W	11000lm	R1 R2	IP65	>50000h
DG5101B	AC90-305V	30WX3 Module	120 W	13200lm	R1 R2	IP65	>50000h
DG5101C	AC90-305V	15WX2 Module	150 W	16500lm	R1 R2	IP65	>50000h
DG5101D	AC90-305V	20WX2 Module	80 W	8800lm	R1 R2	IP65	>50000h
DG5101E	AC90-305V	30WX2 Module	100 W	11000lm	R1 R2	IP65	>50000h
DG5101F	AC90-305V	15WX4 Module	120 W	13200lm	R1 R2	IP65	>50000h
DG5101G	AC90-305V	20WX4 Module	140 W	15400lm	R1 R2	IP65	>50000h
DG5101H	AC90-305V	30WX4 Module	160 W	17600lm	R1 R2	IP65	>50000h
DG5101I	AC90-305V	15WX5 Module	120 W	13200lm	R1 R2	IP65	>50000h
DG5101J	AC90-305V	20WX5 Module	140 W	15400lm	R1 R2	IP65	>50000h
DG5101K	AC90-305V	30WX5 Module	160 W	17600lm	R1 R2	IP65	>50000h



Website



Facebook



Google+



Twitter

📍 New Industry Area, Hecun, Danzao Town, Nanhai, Foshan City, China

☎ 0757-8180-8675

🌐 www.liteharbor.com

✉ info@liteharbor.com