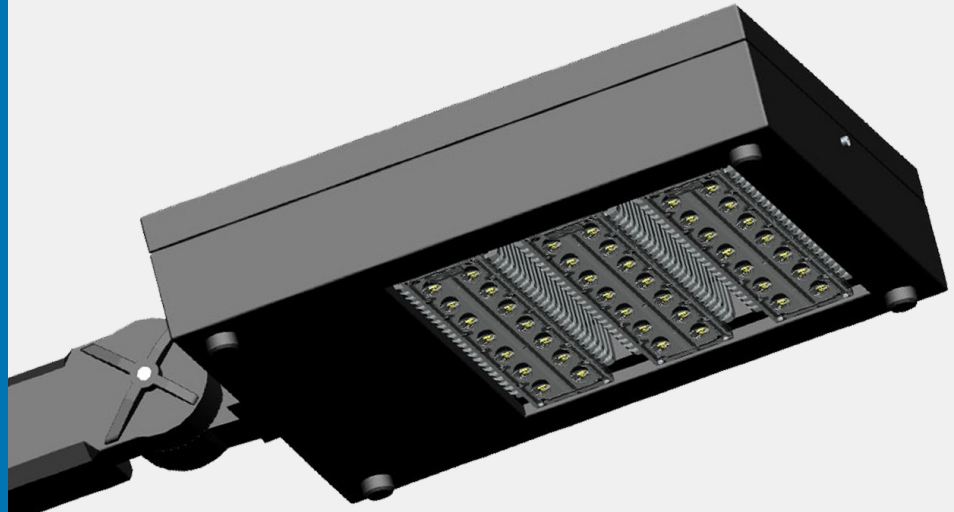




LED STREET LIGHT DG5102



DESCRIPTION

DESCRIPTION

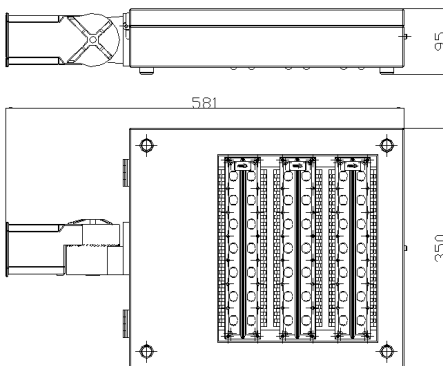
- Specifically for road lighting design and aiming at the shortage of the traditional light source, fully optimized design of a road to meet the special requirements of the new energy-saving products, this product uses the high power LED light source CREE, with optical design and thermal design of superconducting material for cooling circuit intelligent management, advanced leading products in the road lighting has superior performance.

FEATURES

- Smooth linear and the LED structure characteristic organic combination.
- Appearance simplicity, delicate and smooth.
- Modular design, effectively keep the lamp good heat dissipation effect.
- IP Rating: IP65
- Unique two light distribution design.
- Lamps and lanterns adopt imported monocrystalline silicon solar panels.
- Long life power supply to ensure that the service life of 50000 hours or more.

DIMENSIONS

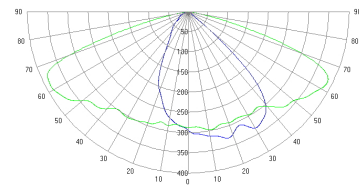
L: 581xW: 350xH: 120mm



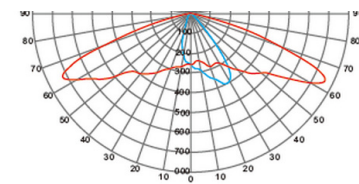
DETAILS

- Input Voltage: AC90-305V
- Frequency: 47-63Hz
- Power Factor: >0.95
- Light Source: 15WX3module
- Power: LED80-160W
- Luminous Efficiency: >110lm/W
- Luminous Flux: 9900lm
- CRI: >75
- Working Temperature: -30 --50°C
- Life Span: >50000h
- Class: CLASS I
- Dimensions: 580X350X120mm
- CCT: Warm white 2850-3200K
Pure white 3700K-4200K
Cool white 4700K-5300K

LIGHT DISTRIBUTION CURVE



R1



R2



Website



Facebook



Google+



Twitter



APPLICATION

- Suitable for urban major road, secondary road, sidewalk residential zones, industrial area, square, park, school, Villa courtyard etc.

Other Special Requirements please Confirm with Factory

ORDERING GUIDE

Model	Input Voltage	LED light source	Power	Luminous flux	Optional light	IP Rating	operation life
DG5102	AC90-305V	15WX3 Module	90 W	9900lm	R1 R2	IP65	>50000h
DG5102A	AC90-305V	20WX3 Module	100 W	11000lm	R1 R2	IP65	>50000h
DG5102B	AC90-305V	30WX3 Module	120 W	13200lm	R1 R2	IP65	>50000h
DG5102C	AC90-305V	15WX2 Module	150 W	16500lm	R1 R2	IP65	>50000h
DG5102D	AC90-305V	20WX2 Module	80 W	8800lm	R1 R2	IP65	>50000h
DG5102E	AC90-305V	30WX2 Module	100 W	11000lm	R1 R2	IP65	>50000h
DG5102F	AC90-305V	15WX4 Module	120 W	13200lm	R1 R2	IP65	>50000h
DG5102G	AC90-305V	20WX4 Module	140 W	15400lm	R1 R2	IP65	>50000h
DG5102H	AC90-305V	30WX4 Module	160 W	17600lm	R1 R2	IP65	>50000h
DG5102I	AC90-305V	15WX5 Module	120 W	13200lm	R1 R2	IP65	>50000h
DG5102J	AC90-305V	20WX5 Module	140 W	15400lm	R1 R2	IP65	>50000h
DG5102K	AC90-305V	30WX5 Module	160 W	17600lm	R1 R2	IP65	>50000h



📍 New Industry Area, Hecun, Danzao Town, Nanhai, Foshan City, China

☎ 0757-8180-8675

🌐 www.liteharbor.com

✉ info@liteharbor.com