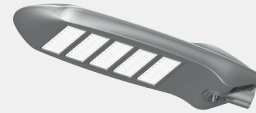
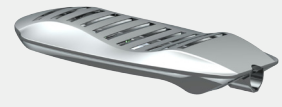




LED STREET LIGHT DG5103



Front



Opposite

DESCRIPTION

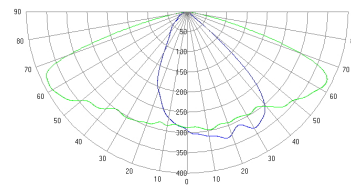
FEATURES

- The smooth linear and the LED structure characteristic organic combination, Appearance simplicity and comfortable, The concept design of the humanized structure of the lamp.
- Excellent self cleaning function, Curve shape design, Simple, delicate and smooth, Good self cleaning function, make the light body surface clean, To maintain good heat dissipation effect, to ensure the life of LED.
- High pressure die casting aluminum alloy (ADC12) integral forming, With sufficient strength and good seismic performance, At the same time, the whole lamp protection level is good, reaching IP65.
- Unique two light distribution design, the lost light curve is a bat wing, the standard rectangular light spot, to ensure that the light distance in the 40M can achieve good uniformity.
- Long life power supply to ensure that the service life of 50000 hours or more, with the short circuit protection open circuit protection, thermal protection and other multiple protection functions, to achieve synchronization with the LED lamp life

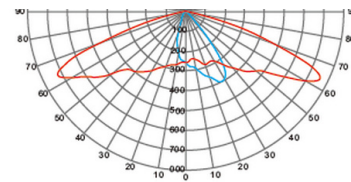
DESCRIPTION

- Specifically designed for road lighting needs
- To optimize the design of a new type of environmental protection and energy saving products which meet the special requirements of the road.
- This product uses CREE high power LED light source.

LIGHT DISTRIBUTION CURVE

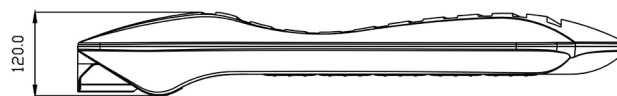
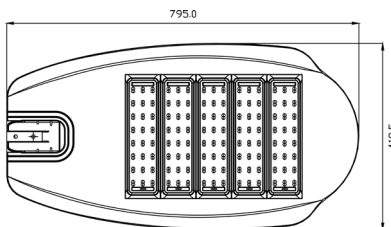


R1



R2

DIMENSIONS



L: 750xW: 419.5xH: 120mm



Website



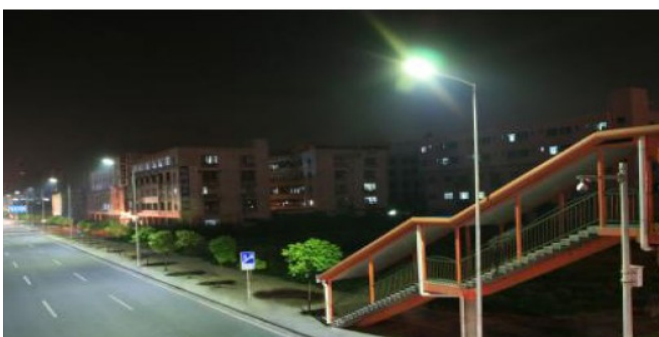
Facebook



Google+



Twitter



APPLICATION

- Suitable for urban major road, secondary road, sidewalk residential zones, Industrial area, square, park, school, Villa courtyard etc.
- Other Special Requirements please Confirm with Factory

ORDERING GUIDE

Model	DG5103	DG5103A	DG5103B	DG5103C	DG5103D	DG5103E
Input Voltage	AC90-305V	AC90-305V	AC90-305V	AC90-305V	AC90-305V	AC90-305V
Power Factor	>0.95	>0.95	>0.95	>0.95	>0.95	>0.95
LED Light	20X5X2W	20X4X2W	20X3X2W	20X5X1.5W	20X4X1.5W	20X3X1.5W
Power	200W	160W	120W	150W	120W	90W
Luminous Efficiency	>110lm/W	>110lm/W	>110lm/W	>110lm/W	>110lm/W	>110lm/W
Light Distribution	R1 R2	R1 R2	R1 R2	R1 R2	R1 R2	R1 R2
Luminous flux	22000lm	17600lm	13200lm	16500lm	1320lm	9900lm
Ambient Temperature	-30 - -50°C					
Color Temperature	Warm white:2850K-3200K		Pure white:3700K-4200K		Cool white:4700K-5300K	
IP Rating	IP65					
Service Life	>50000h					
Installation	Cantilever Mounting					
Dimensions	750X419.5X120mm					



📍 New Industry Area, Hecun, Danzao Town, Nanhai, Foshan City, China

☎ 0757-8180-8675

🌐 www.liteharbor.com

✉ info@liteharbor.com