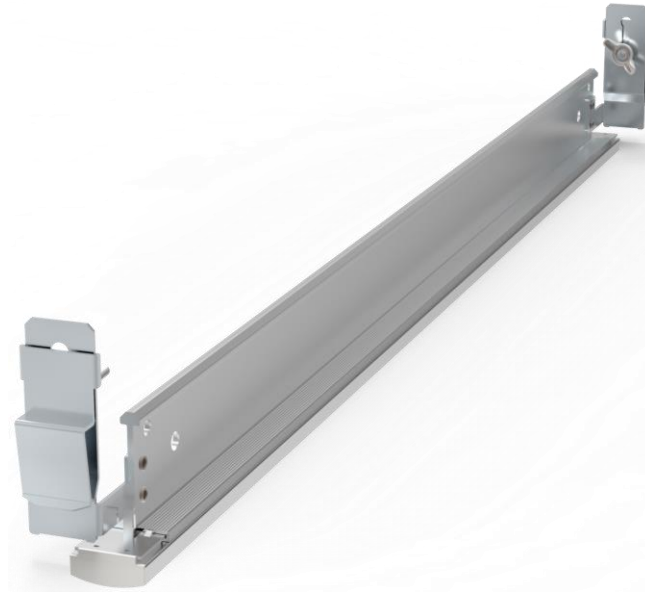


Cross Tee Linear Light

Catalog #		Prepared by	LiteHarbor
Project		Date	
Notes			



Star-Sky Series Cross Tee Linear Light

Features

- This product is a long linear light fixture for tee suspended ceiling, a new way to seamlessly integrate recessed downlights with architectural suspension systems. For the first time, LED downlights can be placed at the intersection of the ceiling - allowing for perfect alignment of lighting and architecture.
- This series has four different mounting, slot, hook, hang & snap. The slot mounting allow the line fitting to directly replace existing ceiling gird. It is a simple as removing the grid and fitting in with line. For hook mounting, it mounts the linear light directly onto the grid without the need to removing the existing gird. This is most suitable for the main grid. The wire hanger allows the light to directly hang off the ceiling. Snaps mounting allow the lamp to recess into the ceiling.
- LED line unique mounting system allows the lamp to be place directly into the ceiling grid.we also offer mounting pieces that can form different shapes. You can create your own shape on the ceiling. With this linear fixture on the ceiling, there is no requirement for additional holes to made, just build your own shape and create a unique ceiling.
- Aluminum housing and high heat conductive alloy with built in protection for short circuit/overload/over voltage/over temperature.Smart voltage remains constant to ensure flexible connection with the line.

Light Source

Using energy saving LED light source, a variety of CCT is optional, and other CCT can be provided according to the requirements.



Liteharbor Lighting Technology Co., Ltd.

New Industry Area Hecun Danzao Town
Nanhai Foshan City Guangdong China

TEL: +86-757-8180 8687

FAX: +86-757-8180 8685

E-mail: info@liteharbor.com

Website: www.liteharbor.com

Specifications subject to change w/o notice

Revision: May. 2018



LED LINEAR LIGHT

Applications

Apply to offices, shopping malls.

Dimming

Standard dimming control: 0~10V dimming.

Parameter List

Watt	10W/15W
Voltage	AC 120V~277V
Frequency	50/60 Hz
PF	>0.98
Dimming	Non-Dimming/0~10V Dimming/TRIAC Dimming
CRI	80+/90+
CCT	3000K/CCT tunable

Listing / Warranty

ETL listed to US and Canadian standards for damp location W/Feed through.

5 Year Limited Warranty.

Ordering Guide

Series	Lumen	CCT/CRI	Dimming
<input type="checkbox"/> MB-60	<input type="checkbox"/> 1200lm	<input type="checkbox"/> 3000K/80+ CRI	<input type="checkbox"/> Non-Dimming
<input type="checkbox"/> Cross Tee Linear Light	<input type="checkbox"/> 1800lm	<input type="checkbox"/> 3000K/90+ CRI	<input type="checkbox"/> 0~10V Dimming
		<input type="checkbox"/> CCT tunable	<input type="checkbox"/> TRIAC

Emergency Backup

- Yes
- No



Liteharbor Lighting Technology Co., Ltd.

New Industry Area Hecun Danzao Town
Nanhai Foshan City Guangdong China

TEL: +86-757-8180 8687

FAX: +86-757-8180 8685

E-mail: info@liteharbor.com

Website: www.liteharbor.com

Specifications subject to change w/o notice

Revision: May. 2018

