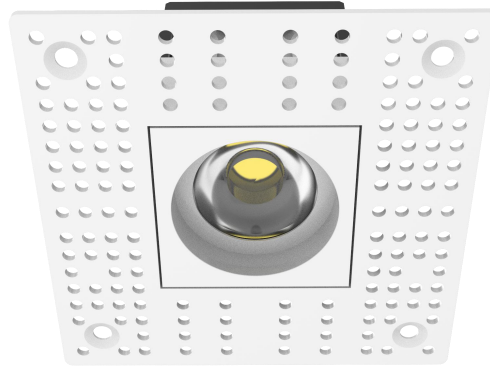


XL-002-R-1-TL LED DOWNLIGHT

Catalog #		Prepared by	LiteHarbor
Project		Date	
Notes			



LED DOWNLIGHT

Pressable Trimless Miniature LED Recessed Downlight

Description

This Product is the lighting embodiment of miniature, recessed LED solutions for residential and hospitality venues and boutiques. Available in a lot of shapes, frames, colors and accessories, as a straight or a symmetrical spot, or as general lighting, and it's combines choice with exclusive design and high-quality lighting technology.

Features

- The choice combines exclusive design with high quality lighting technology.
- A lot of shapes, frames and colors, providing more options for you.
- Available in 1,2, 3, 4 lamps.
- Beam Angle: 12/24/36/60/90 Degrees.
- Life Rated for 50,000 hours at 70% lumen maintenance.
- Easy installation.

Listing / Warranty

ETL listed to US and Canadian standards for damp location W/Feed through.
5 Year Limited Warranty.



Liteharbor Lighting Technology Co., Ltd.
New Industry Area Hecun Danzao Town
Nanhai Foshan City Guangdong China

TEL: +86-757-8180 8687
FAX: +86-757-8180 8685
E-mail: info@liteharbor.com

Website: www.liteharbor.com
Specifications subject to change w/o notice
Revision: Jul. 2019

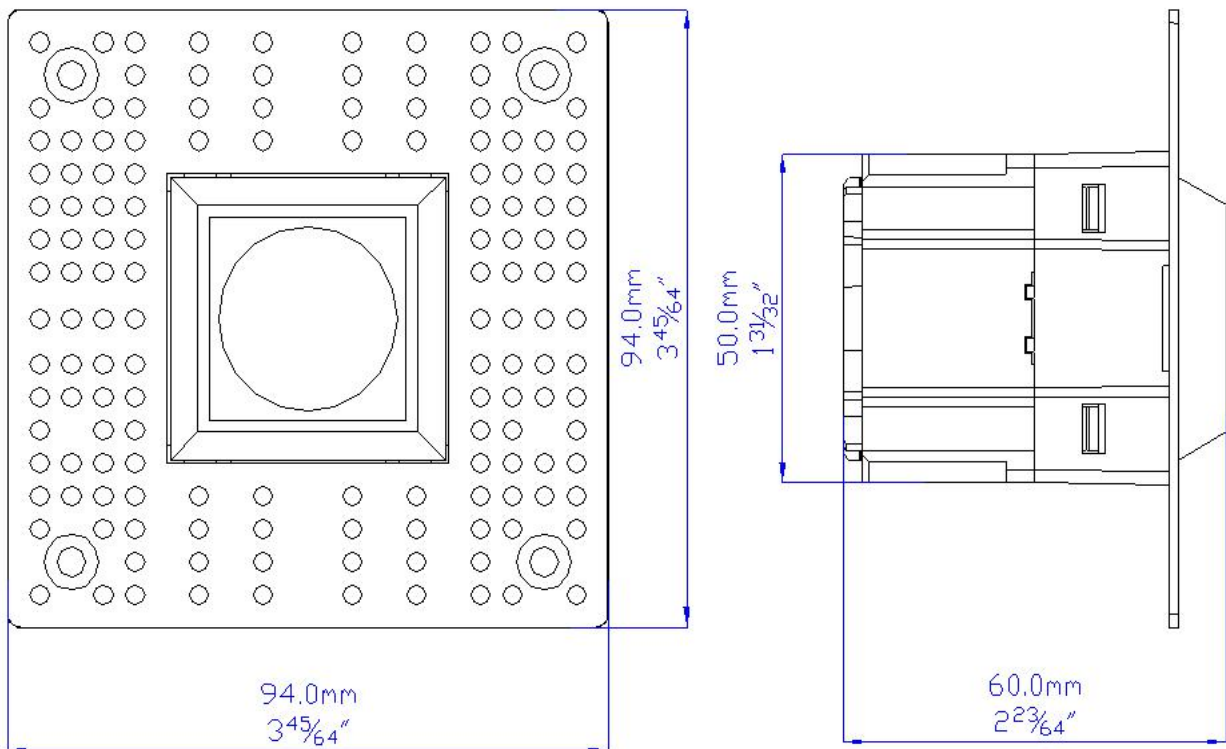
Applications

Suitable for jewelry stores, boutiques, luxury goods stores, shopping malls and other places that require concentrated lighting and accent lighting.

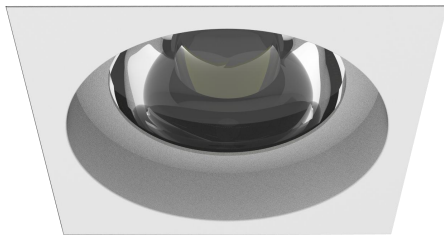
Parameter

Voltage	AC 120V/277V/120~277V
Frequency	60 Hz
Watt	6W Max.
Driver	Liteharbor
Dimmable	Dimming/Non-dimming
Lumen	480-600lm
Light Source	COB
CRI	90+
Beam Angle	12/24/36/60/90D
CCT	2700K-5000K
Material	Aluminum
Finish	White/Black/Brown

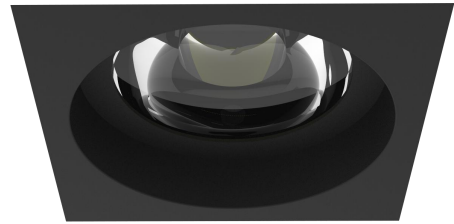
Dimensions



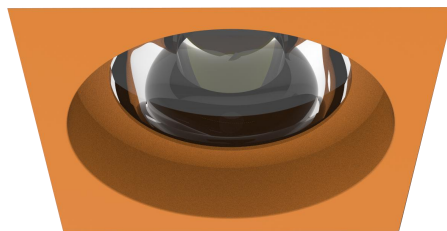
Color Options



White



Black



Brown

*Customized is available



Ordering Guide

Series	Input Voltage	CCT/CRI	Finish	Dimming
<input type="checkbox"/> XL-002-R-1-TL	<input type="checkbox"/> 120V	<input type="checkbox"/> 3000K/90+	<input type="checkbox"/> White	<input type="checkbox"/> Dimming
LED Downlight	<input type="checkbox"/> AC 277V	<input type="checkbox"/> 4000K/90+	<input type="checkbox"/> Black	<input type="checkbox"/> Non-Dimming
	<input type="checkbox"/> AC 120~277V	<input type="checkbox"/> 5000K/90+	<input type="checkbox"/> Brown	

Beam Angle

- 12°
- 24°
- 36°
- 60°
- 90°

*Other special requirements please confirm with our factory



Litcharbor Lighting Technology Co., Ltd.
New Industry Area Hecun Danzao Town
Nanhai Foshan City Guangdong China

TEL: +86-757-8180 8687
FAX: +86-757-8180 8685
E-mail: info@litcharbor.com

Website: www.litcharbor.com
Specifications subject to change w/o notice
Revision: Jul. 2019