

# XL-002-R-2-TL LED DOWNLIGHT

<b>Catalog #</b>		<b>Prepared by</b>	LiteHarbor
<b>Project</b>		<b>Date</b>	
<b>Notes</b>			



## Pressable Trimless Miniature Multiple LED Recessed Downlight with 2 Heads

### Description

This Product is the lighting embodiment of miniature, recessed LED solutions for residential and hospitality venues and boutiques. Available in a lot of shapes, frames, colors and accessories, as a straight or a symmetrical spot, or as general lighting, and it's combines choice with exclusive design and high-quality lighting technology.

### Features

- The choice combines exclusive design with high quality lighting technology.
- A lot of shapes, frames and colors, providing more options for you.
- Available in 1,2, 3, 4 lamps.
- Beam Angle: 12/24/36/60/90 Degrees.
- Life Rated for 50,000 hours at 70% lumen maintenance.
- Easy installation.

### Listing / Warranty

ETL listed to US and Canadian standards for damp location W/Feed through.  
5 Year Limited Warranty.



**Liteharbor Lighting Technology Co., Ltd.**  
New Industry Area Hecun Danzao Town  
Nanhai Foshan City Guangdong China

TEL: +86-757-8180 8687  
FAX: +86-757-8180 8685  
E-mail: info@liteharbor.com

Website: www.liteharbor.com  
Specifications subject to change w/o notice  
Revision: Jul. 2019

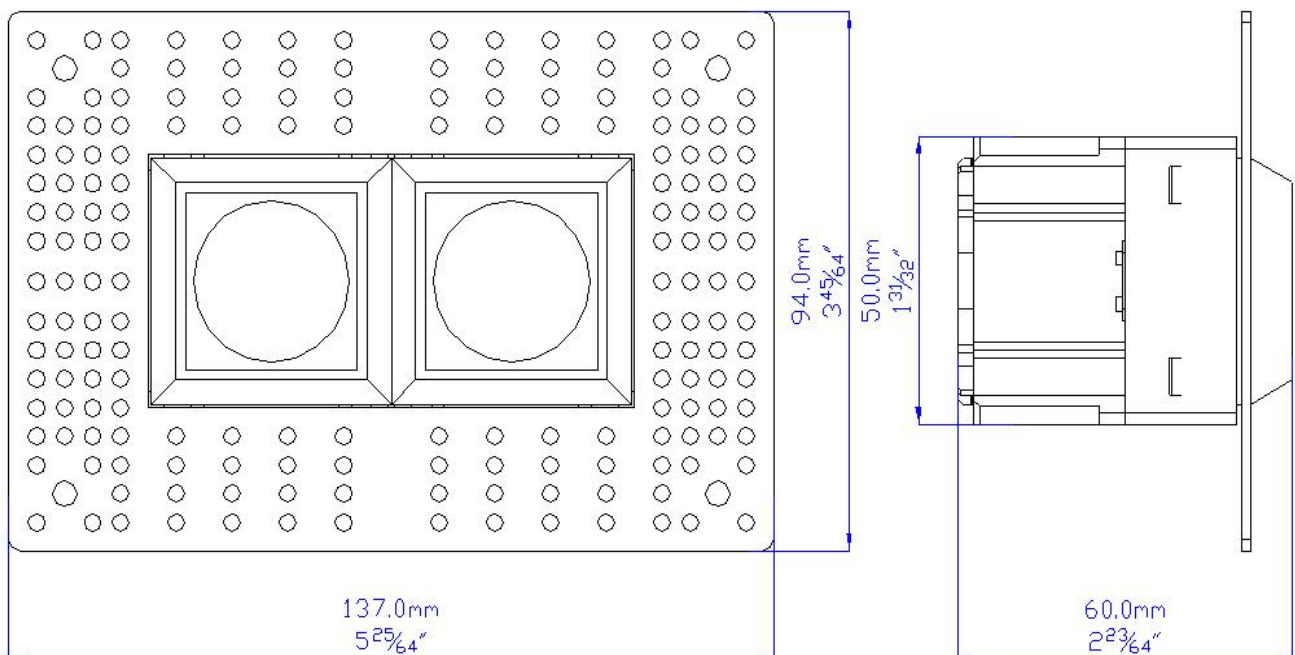
## Applications

Suitable for jewelry stores, boutiques, luxury goods stores, shopping malls and other places that require concentrated lighting and accent lighting.

## Parameter

Voltage	AC 120V/277V/120~277V
Frequency	60 Hz
Watt	6W/lamp
Driver	Liteharbor
Dimmable	Dimming/Non-dimming
Lumen	480-600lm
Light Source	COB
CRI	90+
Beam Angle	12/24/36/60/90D
CCT	2700K-5000K
Material	Aluminum
Finish	White/Black/Brown

## Dimensions



LED DOWNLIGHT

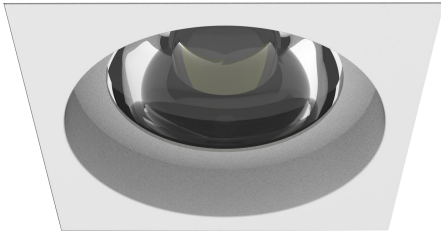


**Liteharbor Lighting Technology Co., Ltd.**  
 New Industry Area Hecun Danzao Town  
 Nanhai Foshan City Guangdong China

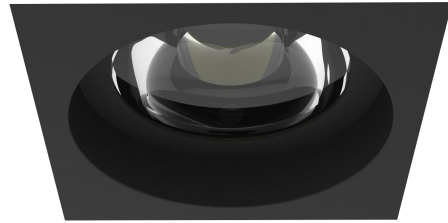
TEL: +86-757-8180 8687  
 FAX: +86-757-8180 8685  
 E-mail: info@liteharbor.com

Website: www.liteharbor.com  
 Specifications subject to change w/o notice  
 Revision: Jul. 2019

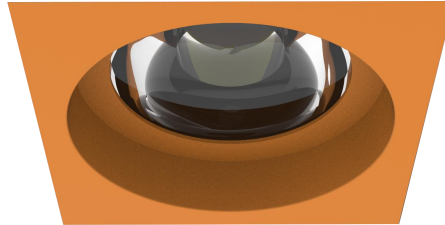
## Color Options



Option 1: White



Option 2: Black



Option 3: Brown



## Ordering Guide

Series/Lumen	Input Voltage	CCT/CRI	Finish	Dimming
<input type="checkbox"/> XL-002-R-2-TL LED Downlight	<input type="checkbox"/> 120V <input type="checkbox"/> AC 277V <input type="checkbox"/> AC 120~277V	<input type="checkbox"/> 3000K/90+ <input type="checkbox"/> 4000K/90+ <input type="checkbox"/> 5000K/90+	<input type="checkbox"/> White <input type="checkbox"/> Black <input type="checkbox"/> Brown	<input type="checkbox"/> Dimming <input type="checkbox"/> Non-Dimming

### Beam Angle

- 12°
- 24°
- 36°
- 60°
- 90°

\*Other special requirements please confirm with our factory



**Liteharbor Lighting Technology Co., Ltd.**

New Industry Area Hecun Danzao Town  
Nanhai Foshan City Guangdong China

TEL: +86-757-8180 8687

FAX: +86-757-8180 8685

E-mail: [info@liteharbor.com](mailto:info@liteharbor.com)

Website: [www.liteharbor.com](http://www.liteharbor.com)

Specifications subject to change w/o notice

Revision: Jul. 2019