

XL-002-S-2-TL LED DOWNLIGHT

Catalog #		Prepared by	LiteHarbor
Project		Date	
Notes			



LED DOWNLIGHT

Pressable Trimless Miniature Multiple LED Recessed Downlight with 2 Heads

Description

This Product is the lighting embodiment of miniature, recessed LED solutions for residential and hospitality venues and boutiques. Available in a lot of shapes, frames, colors and accessories, as a straight or a symmetrical spot, or as general lighting, and it's combines choice with exclusive design and high-quality lighting technology.

Features

- The choice combines exclusive design with high quality lighting technology.
- A lot of shapes, frames and colors, providing more options for you.
- Available in 1,2, 3, 4 lamps.
- Beam Angle: 12/24/36/60/90 Degrees.
- Life Rated for 50,000 hours at 70% lumen maintenance.
- Easy installation.

Listing / Warranty

ETL listed to US and Canadian standards for damp location W/Feed through.
5 Year Limited Warranty.



Liteharbor Lighting Technology Co., Ltd.
New Industry Area Hecun Danzao Town
Nanhai Foshan City Guangdong China

TEL: +86-757-8180 8687
FAX: +86-757-8180 8685
E-mail: info@liteharbor.com

Website: www.liteharbor.com
Specifications subject to change w/o notice
Revision: Jul. 2019

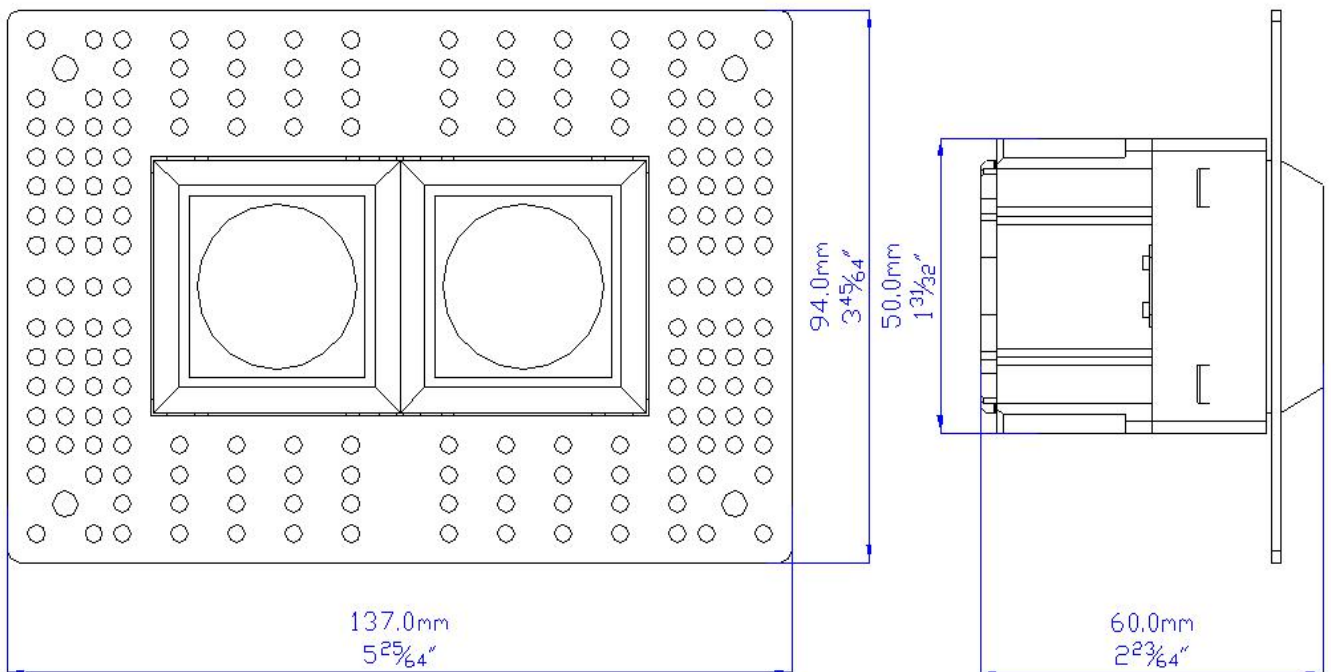
Applications

Suitable for jewelry stores, boutiques, luxury goods stores, shopping malls and other places that require concentrated lighting and accent lighting.

Parameter

Voltage	AC 120V/277V/120~277V
Frequency	60 Hz
Watt	6W/lamp
Driver	Liteharbor
Dimmable	Dimming/Non-dimming
Lumen	480-600lm
Light Source	COB
CRI	90+
Beam Angle	12/24/36/60/90D
CCT	2700K-5000K
Material	Aluminum
Finish	White/Black/Brown

Dimensions



LED DOWNLIGHT

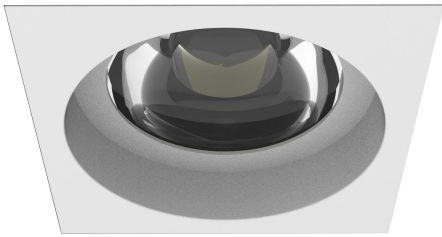


Liteharbor Lighting Technology Co., Ltd.
New Industry Area Hecun Danzao Town
Nanhai Foshan City Guangdong China

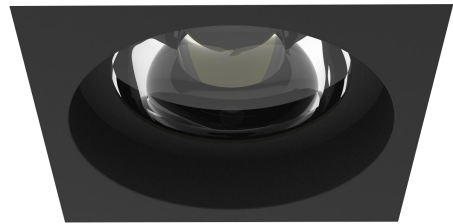
TEL: +86-757-8180 8687
FAX: +86-757-8180 8685
E-mail: info@liteharbor.com

Website: www.liteharbor.com
Specifications subject to change w/o notice
Revision: Jul. 2019

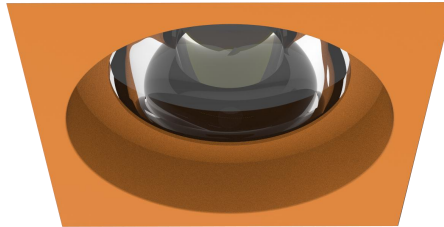
Color Options



White



Black



Brown

*Customized is available

Ordering Guide

Series/Lumen	Input Voltage	CCT/CRI	Finish	Dimming
<input type="checkbox"/> XL-002-S-2-TL LED Downlight	<input type="checkbox"/> 120V <input type="checkbox"/> AC 277V <input type="checkbox"/> AC 120~277V	<input type="checkbox"/> 3000K/90+ <input type="checkbox"/> 4000K/90+ <input type="checkbox"/> 5000K/90+	<input type="checkbox"/> White <input type="checkbox"/> Black <input type="checkbox"/> Brown	<input type="checkbox"/> Dimming <input type="checkbox"/> Non-Dimming

Beam Angle

- 12°
- 24°
- 36°
- 60°
- 90°

*Other special requirements please confirm with our factory



Liteharbor Lighting Technology Co., Ltd.
New Industry Area Hecun Danzao Town
Nanhai Foshan City Guangdong China

TEL: +86-757-8180 8687
FAX: +86-757-8180 8685
E-mail: info@liteharbor.com

Website: www.liteharbor.com
Specifications subject to change w/o notice
Revision: Jul. 2019

