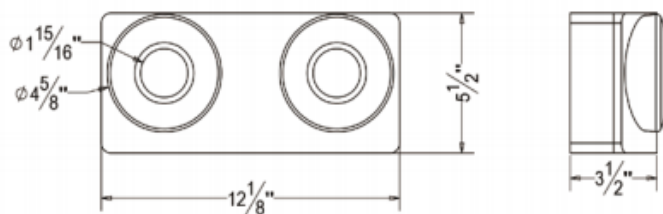


EMI206 EML206 Incandescent Emergency Light

Catalog #		Prepared by	LiteHarbor
Project		Date	
Notes			



Description

- 1) Ultra-bright MR16 halogen/LED lamps.
- 2) 6-Volt, sealed lead acid, rechargeable, maintenance-free battery.
- 3) Completely self-contained.
- 4) Fully automatic operation.
- 5) Compact low-profile design.
- 6) Automatic low voltage disconnect (LVD).
- 7) Push-to-test switch.
- 8) Dual voltage, 120/277VAC operation.
- 9) Damp location listed.
- 10) Operation time-90 minutes.
- 11) Warranty-2 years limited warranty.

A B C D

Item No.: EMI206/ EML206

A	Series
EMI206/EML206	Emergency Light

B	Input Voltage
120V	
277	277V

C	Colour
WH	White
BK	Black

D	Battery
AC	AC Only
	Battery Backup

Housing Colour:

WH / BK

Battery

NI-MH battery, Maintenance-free, Long-Life
Full Recharge Time is 24hrs (max.)

Warranty

2 years limited warranty.



EXIT & EMERGENCY LIGHT



Liteharbor Lighting Technology Co., Ltd.
New Industry Area Hecun Danzao Town
Nanhai Foshan City Guangdong China

TEL: +86-757-8180 8675
FAX: +86-757-8180 8685
E-mail: info@liteharbor.com

Website: www.liteharbor.com
Specifications subject to change w/o notice
Revision: Jan. 2015